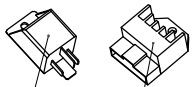


IN DOTAZIONE / INCLUDED

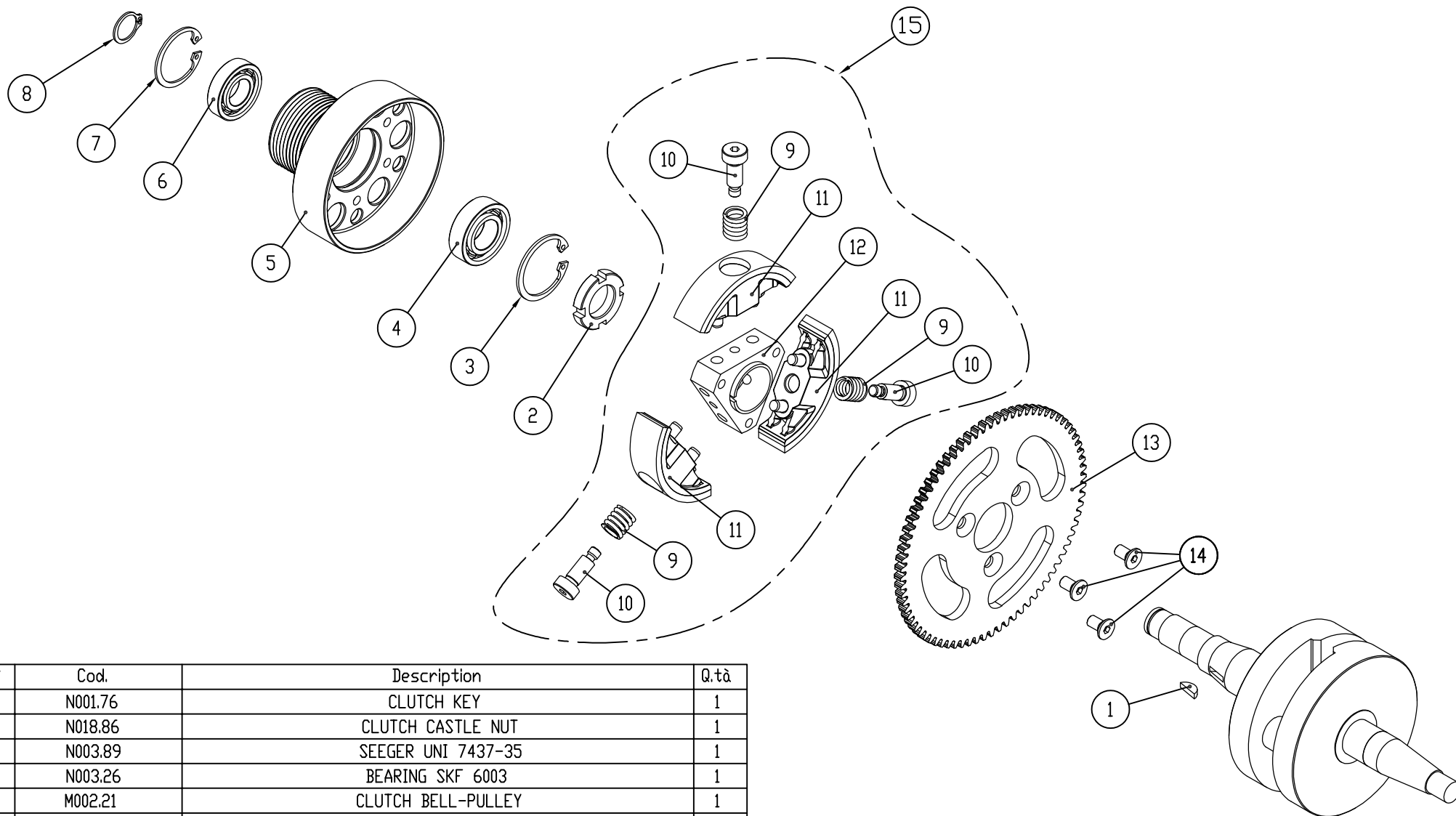


121 119

VEDI ASSIEME "A"  
 SEE ASSEMBLY  
 DIAGRAM "A"

MOD:  
 -F1-E9-CL-F CORSA LUNGA 200cc Motore a 90°, con frizione e avviamento elettrico con carica /  
 90° engine, with clutch and electric starter with charger

A termine di legge ci riserviamo la proprietà del presente disegno col divieto a chiunque di riprodurlo o renderlo noto a terzi senza l'autorizzazione di PARMAKIT. Inoltre la Ditta si riserva di apportare modifiche alla propria produzione senza preavviso ed in qualsiasi momento.  
 At the end of the law, we reserve the ownership of this drawing with forbidden to reproduce or disclosed to third parties without the permission of PARMAKIT. In addition, the Company reserves the right to make changes to its products without notice at any time.



N°	Cod.	Description	Q.tà
1	N001.76	CLUTCH KEY	1
2	N018.86	CLUTCH CASTLE NUT	1
3	N003.89	SEEGER UNI 7437-35	1
4	N003.26	BEARING SKF 6003	1
5	M002.21	CLUTCH BELL-PULLEY	1
6	N004.26	BEARING SKF 16002	1
7	N002.89	SEEGER UNI 7437-32	1
8	N004.89	SEEGER UNI 7435-15	1
9	57012.18	SPRING	3
10	N019.86	BOLT M6x16	3
11	N005.21	CLUTCH SHOES	3
12	N004.21	HOLDER CLUTCH SHOES	1
13	N003.83	STEEL GEAR	1
14	N022.86	BOLT M6x12	3
15	N011.21	COMPLETE CLUTCH ASSEMBLED - ELECTRIC VERSION	1

  
 DISEGNI DI PROPRIETÀ  
 THIS DRAWING IS PROPERTY OF PARMAKIT AND SHALL NOT BE COPIED IN ANY WAY WITHOUT THE WRITTEN AUTHORISATION OF THE COMPANY

A TERMINI DI LEGGE È VIETATO RIPRODURRE O COMUNICARE A TERZI IL CONTENUTO DEL PRESENTE DISEGNO



Strada Antolini, 18/C 43044 Lemignano di Collecchio - Parma - Italia  
 tel. +39.0521.303413 - fax +39.0521.543379  
 E mail: info@parmakit.com - www.parmakit.com

NAME	SIGNATURE	DATE	DESCRIPTION	TITLE
DRAWN		05-06-19		EXPANDED DIAGRAM CLUTCH F1 ELECTRIC STARTER
VERIFIED			QUANTITY:	
APPROVED			MATERIALE:	
DONE			N. DRAW	
QUALITY			WEIGHT: _	ASSEMBLY "A"
			SCALE:0:2	A3
				Foglio 1 di 1