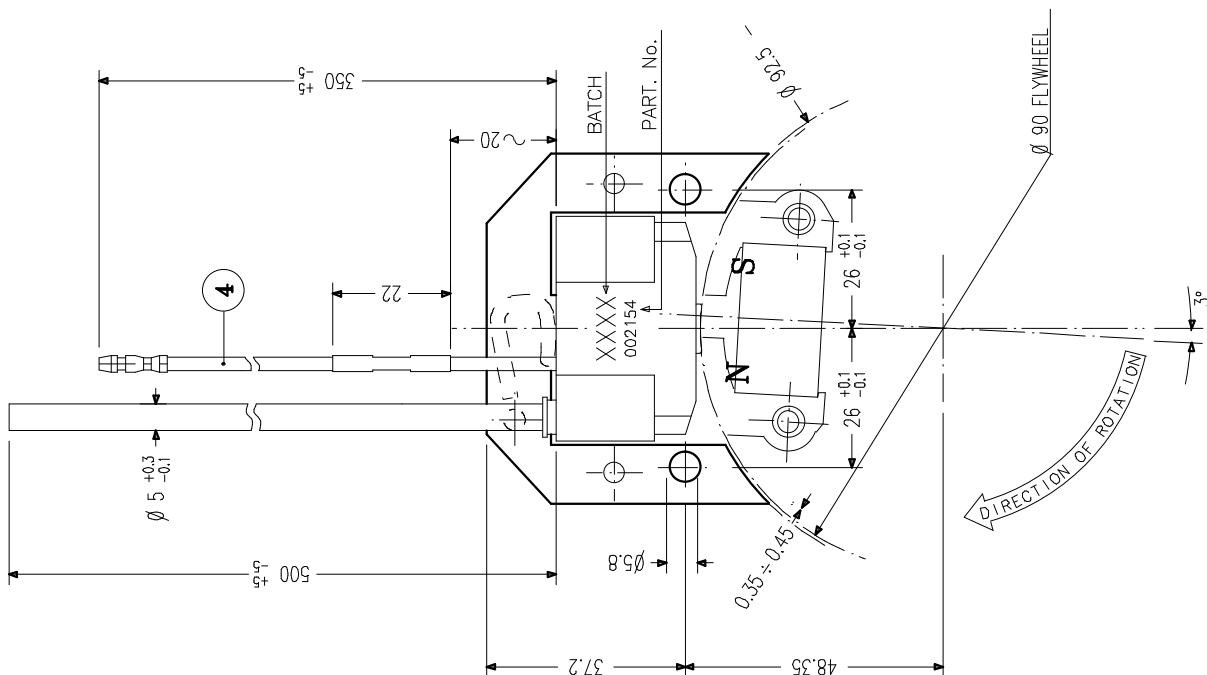


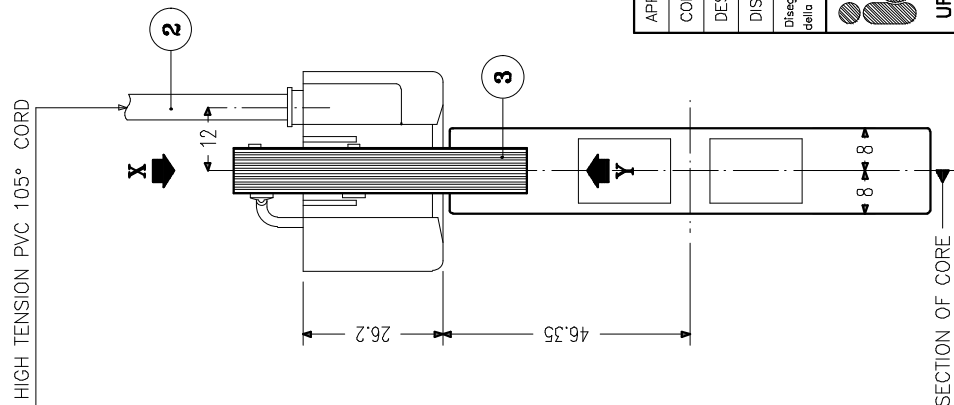
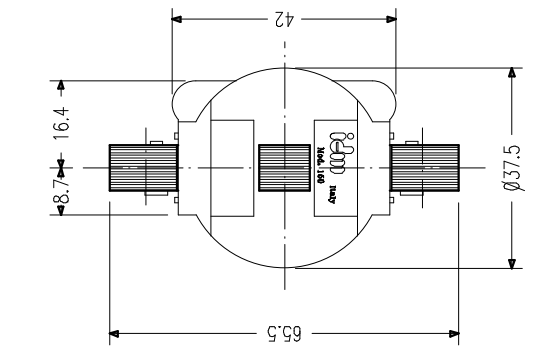
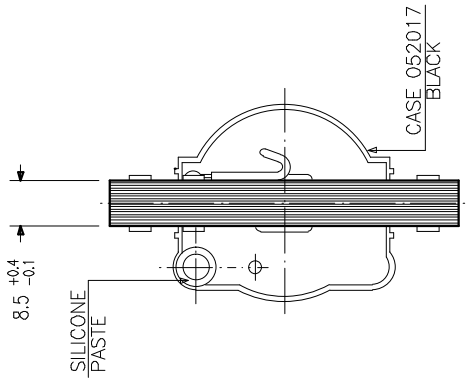
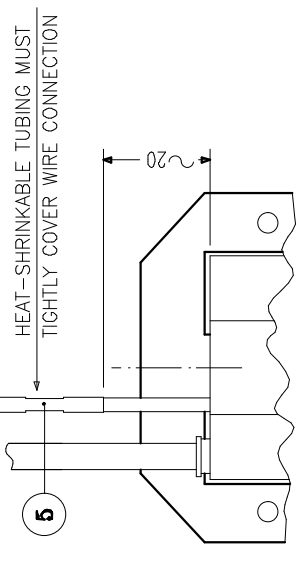
5	057158		TUBING	1	QTY
4	057346		CABLE	1	
3	358020		CORE	1	
2	057712		HIGH TENSION CORD	1	PVC 105° C
1	002154		T.C.I. UNIT ASSY	1	//
NO.	IDM PART NO.	CUSTOMER PART NO.	PART NAME	MATERIAL	

THIS DWG SHOWS THE RELATIVE LOCATION
AT THE INSTANT OF FIRING (4000rpm)



1. RATING

TYPE: T.C.I. INDUCTIVE - NEGATIVE SPARK
 FLYWHEEL DIRECTION OF ROTATION: SEE DWG.
 FLYWHEEL INDUCTION: 410mT ± 10mT
 OPERATING SPEED: 500rpm ~ 10.000rpm
 OPERATING TEMPERATURE: -20° C + 70° C. TEMPERATURE MUST NOT EXCEED 70° C ON CORE, NEAR HOLES FOR FIXING IGNITION TO CRANKCASE, SIDE CRANKCASE. ON SAME LOCATIONS, AFTER ENGINE STOP, TEMP. MUST NOT EXCEED 110° C.
 SEC. OUTPUT 50pF LOADED @ 500 rpm: MIN. 8.0 KV
 SEC. OUTPUT 50pF LOADED @ 10.000 rpm: MIN. 14.0 KV



RESISTANCE VALUE OF COILS (AT 20° C)	
MEASURING PLACE	RESISTANCE VALUE (OHM)
FASTON-CORE	1.1 ± 10%
H.T. CORD-CORE	8.2K ± 10%

APPROV.		7	
CONTR.		6	
DESIGN.		5	
DISEGNAT.		4	
		3	
		2	
		1	
DATA 21.05.01		IND.	DATA
SCALA	1:1		
F. A3	MATERIALE		
Disegno di proprietà esclusiva della IDM srl o termini di legge.			
Cavo stop era lungo 300mm.			
	MODIFICA		
	DISEGN. CONTR.		
	FRATTAMENTO		
DENOMINAZIONE			
T.C.I. UNIT ASSY			
DIS. N°			
002154			
SOST. IL			
DIS. SPER.			
CODICE 002154			

